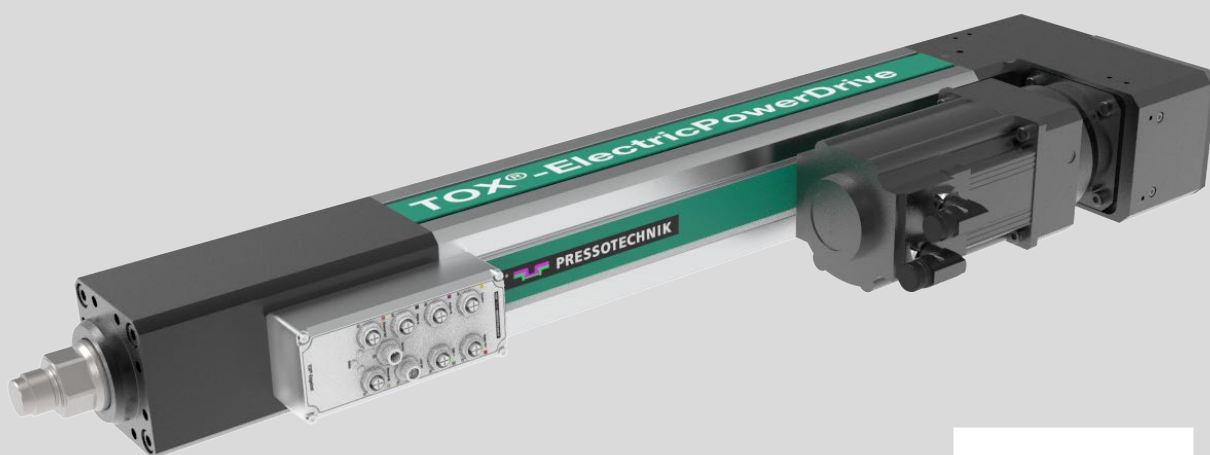
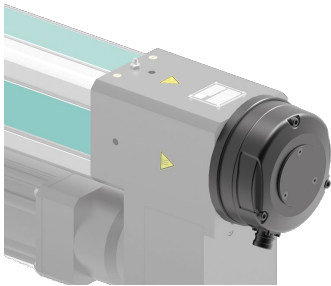


TOX[®]-ElectricPowerDrive Accessories

Data sheet 40.95
2022/05

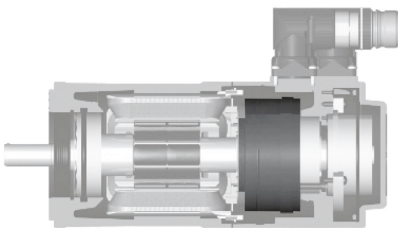


Accessories



Safety brake (mounted on the drive)

The safety brake for the drives is designed as a spring-applied brake. This means that when a power loss occurs, the brake closes and stops the drive and the dynamically loaded working piston.

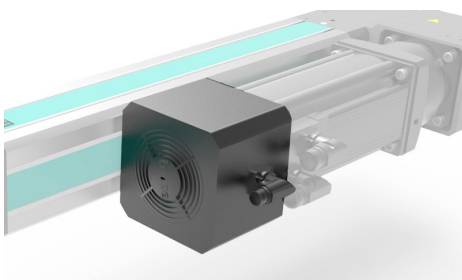


Motor holding brake (intern)

The motor holding brake prevents the weight-loaded working piston from dropping when the system is de-energized. The motor holding brake is connected via the motor cable included in the cable set.

Reference hold

When using a reference hold, no referencing is needed after switching on.



Cooling fan

The servo presses can be equipped with a fan on request. It cools down the motor to enable higher power density and thus higher cycle times.



Piezo-electric sensors

Upon request, a piezo sensor can be integrated.



Grease press

A must have for a long life! With this manual gun the drives can be filled with the TOX®-Special grease. Greasing intervals and amounts according to the manual. (Suitable for 400g TOX®-Special grease cartridge)

Order no.: ZFP



Lubrication unit

The servo presses can be equipped with a automatic lubrication unit. The lubrication unit feeds the drive with the right amount of TOX®-Special grease.

The illustrated lubrication unit is for servo presses up to 200 kN. The lubrication unit for servo presses from 300 kN – 1000 kN is not illustrated.



Special grease for TOX®-ElectricDrives

400g Cartridge

Order no.: ZFE



Calibration equipment type ZKE

For the re-calibration of the TOX®-Electric Power Module. The interval for the re-calibration should be defined by the customer.

Scope of delivery:

- Precision force sensor 10, 50, 100, 200, 500 and 1000kN with connection cable (1.5m) for digital display unit
- Digital display unit (handheld)
- Power supply 3 possibilities: batteries (3 pcs.), USB cable via PC and USB power supply
- USB cable (1.8m)
- DAkkS/DKD/SC – calibration according to DIN ISO 376
- Operating manual and PC software
- Transport case

© A.S.T. GmbH

Fig. similar



Adapter kit for lubrication position

To move the lubrication position to ensure better access to the lubricant filling.